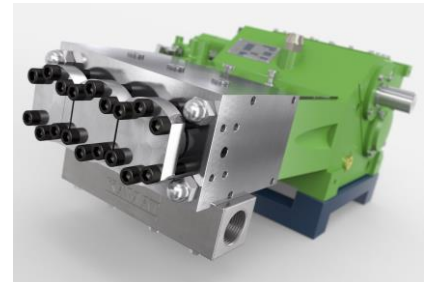


Triplex Plunger Pump K 9000 – 3G

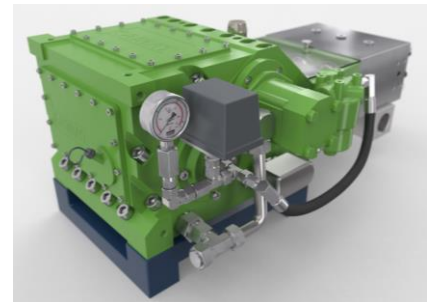
P 10-1

17.12.2015

The K 9000 serves as the higher-performance alternative to the K 8000 with an oil cooler and forced lubrication. This 90 kW high-pressure pump fulfills smaller scale industry applications in process technology or industrial cleaning. The employment of different pump heads in the KAMAT modular system makes various pumped media possible at high temperatures up to 200°C. As with the smaller models, the K 9000 consists of relatively few parts.



- Flow rate based upon 100% volumetric efficiency and 20°C ambient temperature
- Minimum inlet pressure depends on fluid medium
- Speed range 10-100% depending on rod force
- Gear with force-fed lubrication (> 75 kW with oil cooler)
- Standard gear ratios
 $i = 2,75 - 3,22 - 3,68$
- API 674 and ATEX versions available



$n_{nom} = 530 \text{ 1/min}$		p max. bar @ kW				Head type		
Type	l/min	45 kW	55 kW	75 kW	90 kW	A	M	MC
K 9012 – 3G	13	1770	2160	2950	3100	1		
K 9014 – 3G	18	1280	1590	2150	2300	1		
K 9016 – 3G	24	980	1220	1660	1800	1		
K 9018 – 3G	30	800	965	1300	1395	1		
K 9020 – 3G	37	660	800	1065	1130	1		
K 9022 – 3G	45	545	665	890	930	1		H
K 9024 – 3G	54	460	555	755	785	1		H
K 9026 – 3G	63	390	475	645	665	1		H
K 9028 – 3G	73	335	410	555	575	1		H
K 9030 – 3G	84	280	345	470	500	1	1	H
K 9032 – 3G	96	245	300	410	440	1	1	1
K 9036 – 3G	121	190	235	320	345		1	1
K 9040 – 3G	150	155	190	255	280		1	1
K 9045 – 3G	190	120	150	200	220			1
K 9050 – 3G	234	100	120	165	180			1
K 9055 – 3G	283	80	100	135	150			1

API 674 = max. 400 1/min

= Ultra High Pressure UHP

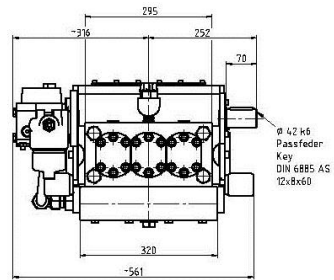
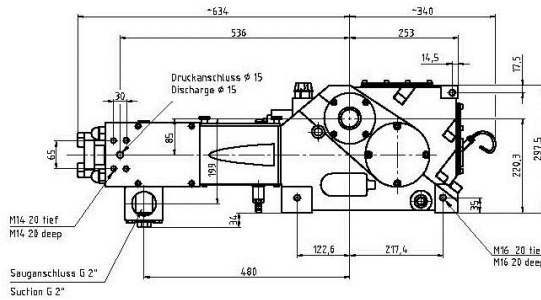
Dimensional Drawing K 9000 – 3G

~ 255 kg

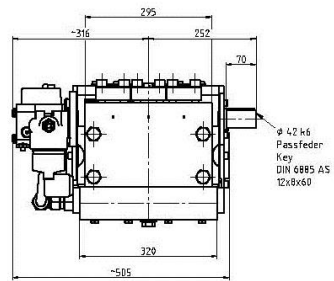
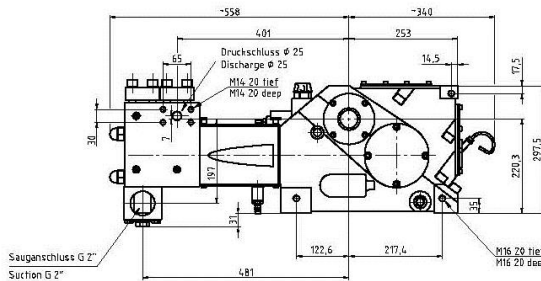
P 10-2

01.05.2017

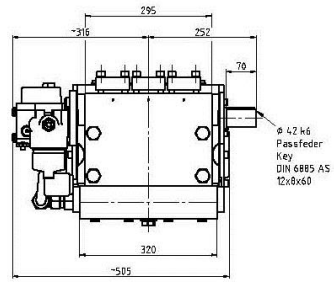
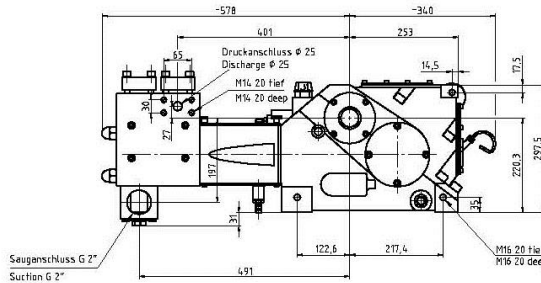
Typ A
Type A



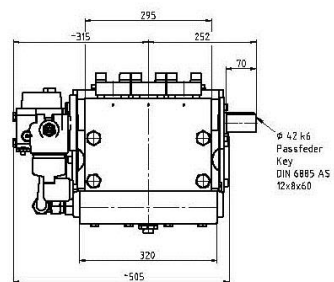
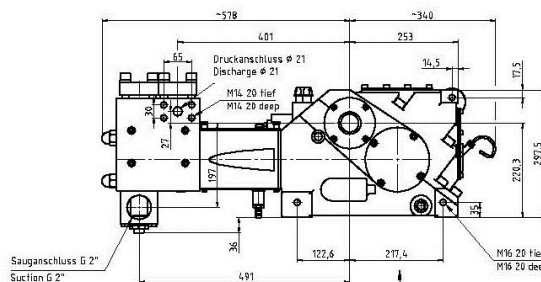
Typ M
Type M



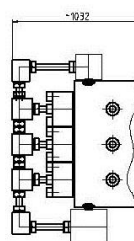
Typ MC
Type MC



Typ MCH
Type MCH



Typ A
Type A
 \geq 1500 bar



Fußmaßzeichnung
Footprint

