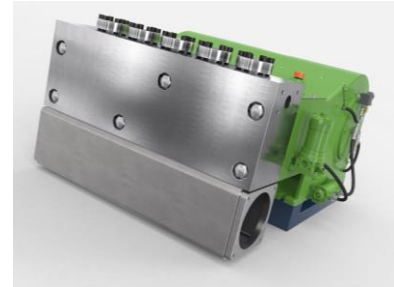


Quintuplex Plunger Pump K 120000 - 5G

P 66-1

01.04.2018

With an input of 1200 kW, the K120000 - 5G high-pressure pump delivers extreme power. Despite the five-cylinder / quintuplex design, it often requires no inlet boost pressure. Each unit accommodates large volume flows with out cavitation. These pumps fulfill a wide range of applications such as sea water, glycol, methanol, oils, hydraulics, water jetting and in mining processes. The gearbox with external oil forced lubrication and oil cooler enables secure, continuous, operation.



- Flow rate based upon 100% volumetric efficiency and 20°C ambient temperature
- Minimum inlet pressure depends on fluid medium
- Speed range 0 -100% depending on rod force
- Crankshaft dynamically balanced
- Gear with external force-fed lubrication and oil cooling
- External gear ratio on request f.e. $i = 4,76; 5,72 ; 6,35$
- API 674 and ATEX versions available



n _{nom} = 320 1/min		p max. bar @ kW				Head type	
Type	l/min	900 kW	1000 kW	1100 kW	1200 kW	A	MC(H)
K 120028 - 5G	158	2970	3300	3500	-----	x	
K 120030 - 5G	181	2585	2875	3160	3450	x	
K 120032 - 5G	206	2275	2525	2780	3030	x	
K 120036 - 5G	260	1800	2000	2200	2400	x	
K 120040 - 5G	322	1455	1655	1780	1940	x	
K 120045 - 5G	407	1150	1280	1405	1530	x	
K 120050 - 5G	502	930	1035	1140	1240	x	
K 120055 - 5G	608	770	855	940	1025	x	x
K 120060 - 5G	723	645	720	790	860	x	x
K 120065 - 5G	849	550	610	675	735	x	x
K 120070 - 5G	985	475	530	580	635	x	x
K 120075 - 5G	1130	415	460	505	550	x	x
K 120080 - 5G	1286	365	405	445	485		x
K 120085 - 5G	1452	320	360	395	430		x
K 120090 - 5G	1628	290	320	350	385		x
K 120095 - 5G	1813	260	285	315	345		x
K 120100 - 5G	2010	235	260	285	310		x
K 120110 - 5G	2432	190	215	235	255		x
K 120120 - 5G	2894	160	180	200	215		x
K 120130 - 5G	3395	135	155	170	185		x
K 120140 - 5G	3939	115	130	145	155		x

API 674 = max. 260 1/min

 = Ultra High Pressure UHP

KAMAT GmbH & Co. KG

Salinger Feld 10, 58454 Witten, Deutschland, Fon +49 (0)23 02 / 89 03-0, Fax +49 (0)23 02 / 80 19 17, info@KAMAT.de, www.KAMAT.de

Technische Änderungen vorbehalten. / The right to technical changes is reserved.

Dimensional Drawing K 120000 - 5G

7.500 kg

P 66-2

01.04.2018

