

JV-KG-EX - POSITIVE DISPLACEMENT SPUR GEAR FLOW METER

Ideal for measuring oil, fuel, additives and chemicals in hazardous area rated environments, such as oil production platforms, land-based oil recovery sites, chemical processing plants and laboratories.



BENEFITS

Simple to Install & Use

These meters are easy to use and install, since there is no need for straight run piping upstream or downstream of the flow meter.

Accurate and Reliable

This meter has the ability to maintain consistent accuracy despite changing viscosity conditions*, with accuracy of +0.5% of reading.

Rugged Construction

The solid construction of the JV-KG-EX is offered in 303 and 316 stainless steel bodies.

Flexible

Meter may be used in applications requiring bi-directional flow, and is offered in six different flow ranges (0.003 to 120.0 GPM).

Economic Low Flow Meter

The meters produce good resolution and high accuracy at low flow rates, offering an affordable replacement for older turbine technology.

*Viscosities above 30cP only

APPLICATIONS

The units in this line of AW Gear flow meters are designed to maintain consistent accuracy - even in changing viscosity conditions. They have a solid construction and excellent dynamic response and are suitable for a variety of industrial applications, including:

- Chemical injection skids
- Fuel & solvent measurement
- Cylinder position measurement
- Pipeline additives

FEATURES

- Six flow ranges from 0.003 to 120 GPM
- Accuracy: up to 0.5% of reading (0.2% with linearization electronics)
- Pressure rating up to 5,000 PSI
- Available in 303 and 316 stainless steel bodies

TECHNICAL SPECIFICATIONS

Measuring Accuracy

± 0.5% over 10:1 turndown with 30cP fluid

Repeatability

± 0.1%

Flow Measuring Ranges

0.003 to 0.8 gpm / 4.32 to 1,152 gpd
0.01 to 2.0 gpm / 14.4 to 2,880 gpd
0.03 to 7.0 gpm / 43.2 to 10,080 gpd
0.05 to 20 gpm / 72.0 to 28,800 gpd
0.50 to 60 gpm / 720.0 to 86,400 gpd
1.0 to 120 gpm / 1,440 to 172,800 gpd

Maximum Operating Pressure

Up to 5,000 psi

Maximum Fluid Temperature

185°F

Ports

NPT; BSPP optional

Sensor Port

3/8" NPT

MATERIALS OF CONSTRUCTION

Body	JVM - 303 Stainless Steel JVS - 316 Stainless Steel
Gears & Ball Bearings	Stainless Steel
O-Ring	PTFE, FKM Optional
Shaft	420 C Stainless Steel

JV-KG-EX - POSITIVE DISPLACEMENT SPUR GEAR FLOW METER

Ideal for measuring oil, fuel, additives and chemicals in hazardous area rated environments, such as oil production platforms, land-based oil recovery sites, chemical processing plants and laboratories.

METER DATA

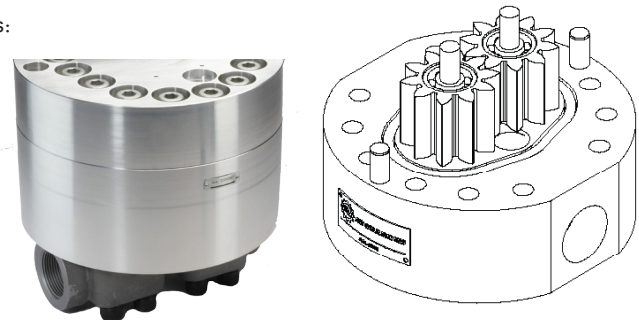
Meter Size	Flow Range (Gal/Min)	Impulses/Gallons	Impulses/CC	Diameter (in)	Height (in)	Weight (Lbs/Kg)	Ports	Filtration (microns)	Pressure Rating
JV#-12KG-EX	0.003-0.8	53,000	14.0	3.0"	2.2"	3.9 / 1.77	1/4" NPT*	30	5,000 psi
JV#-20KG-EX	0.01-2.0	15,900	4.2	3.3"	2.2"	4.9 / 2.22	1/4" NPT*	30	5,000 psi
JV#-30KG-EX	0.03-7.0	6,600	1.7	3.3"	2.6"	5.8 / 2.63	1/2" NPT*	30	5,000 psi
JV#-60KG-EX	0.05-20.0	1,800	0.47	4.9"	4.25"	18 / 8.16	3/4" NPT*	30	5,000 psi
JV#-80KL-EX	0.5-60.0	1,600***	0.42***	8.4"	5.5"	78 / 35.38	1-1/4"***	200	5,000 psi
JV#-90KL-EX	1.0-120.0	800***	0.21***	8.4"	7.0"	97 / 44.91	1-1/4"***	200	5,000 psi

- Complete part # by selecting body material as follows: M=303 Stainless Steel, S=316 Stainless Steel * - NPT port is standard, BSPP is available ** - Through hole for 1-1/4" Code 62 flange connections
 *** - When configured for x4 sensor output

OPTIONAL 1-1/4" CODE 62 FLANGES (NOT INCLUDED)

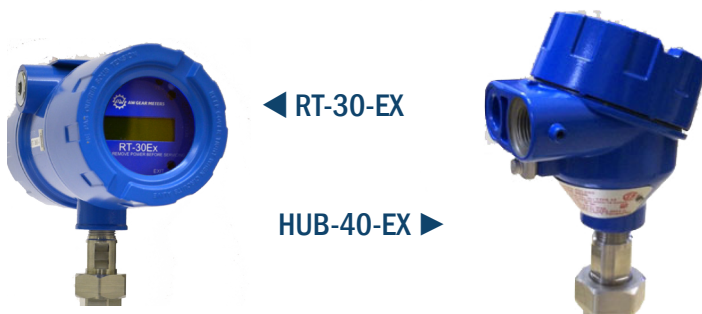
Code 62 flanges are available for the -80 KL and -90KL meters in 3 materials:

Flange	Weight (Lbs/Kg)
Carbon Steel	6 / 2.72
303 Stainless Steel	9 / 4.08
316 Stainless Steel	9 / 4.08



RECOMMENDED ELECTRONICS

Sensor Type	Model	Sensor Features
Hazardous area rated sensor	HUB-40EX	CSA (US & Can) certified pulse output hall effect single sensor
Hazardous area rated sensor	HUB-41EX	ATEX and IECEx hazardous area certifications
Hazardous area rated flow transmitter	RT-30EX	CSA (US & Can) certified rate & total display, 4-20mA analog output, HART communication available



* For more information, see the RT-30EX data sheet.

MJ SYSTEMS
 MJ Systems, LLC
 Authorized AW-Lake Representatives
 TX - Off (281) 842-7600
 LA - Off (225) 726-7114
 www.mjsusa.com • sales@mjsusa.com