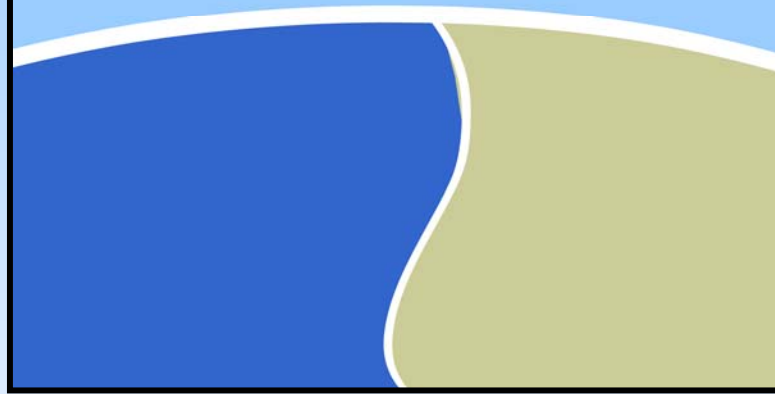


**Keeping it
On The Land**



**The Great Lake Commission's
Great Lakes Basin Program
for Soil Erosion
& Sediment Control**

Portage and Sandusky River Sediment Plumes (Lake Erie)– 6-24-06



Objectives:

- **Minimize off-site damage to harbors, streams, fish and wildlife habitat, recreational facilities, and the basin's public works systems caused by sediment.**
- **Reduce the on-site damages caused by soil erosion on farms, developments, streambanks and shorelines.**



By

- **Recognizing sediment as an important pollutant and improve the linkage between erosion and sediment control and water quality programs;**
- **Maintaining legislative recognition** for the water quality problems associated with soil erosion and sedimentation;
- **Providing dedicated and reliable funding** for soil erosion and sediment control projects in the Great Lakes basin supporting the implementation of urban and rural non-point source pollution management programs;
- **Coordinating efforts, roles and initiatives** between federal, state and local soil and water conservation and pollution control agencies and groups in the Great Lakes basin;
- **Building coalitions and networks** that support the Great Lakes Basin Program;
- **Sharing and obtaining information** on the economic and environmental damage caused by soil erosion and sedimentation.

STOP the



MUDness!

stopthemudness.org

Grant Program

The Basin Program has an annual grant program. All non-federal Governments and non-profits are eligible to apply.

Grant Areas of Interest

- **Demonstration of Management Practices**
- **Information and Education**

Grant Program

The Basin Program has an annual grant program. All non-federal Governments and non-profits are eligible to apply.

Grant Areas of Interest

- **Agricultural/Rural Erosion and Sediment Control**
- **Urban/Construction Erosion and Sediment Control**
- **Forestry/Roadside Erosion and Sediment Control**
- **Stream and Coastal Erosion and Sediment Control**
- **Other Issues**

Sediment Reduction Task Force

Composed of members from each state's environmental and/or natural resources agencies and regional and Federal partners

The task force's main functions are to:

- Provides program direction.**
- Reviews and selects the annual grants.**
- Approve project reports for their state.**

Great Lakes Commission

The Basin Program for Soil Erosion and Sediment Control's activities relate to the Great Lakes Compact through Article VII No. 7: Cooperative programs for control of soil and bank erosion for the general improvement of the Basin.

For Additional Information on Grant Projects, Publications and other Sediment Related Issues visit our website:

WWW.GLC.ORG/BASIN