



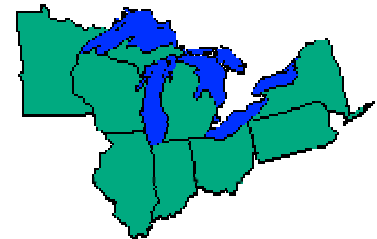
**Great Lakes Tributary Model
Program**

All-Hands Meeting

February 11-12, 2009



**US Army Corps
of Engineers®**



Meeting Objectives

- Review status of ongoing activities

516 All-Hands Meeting
February 11-12, 2009

Meeting Objectives

- Review status of ongoing activities
- Evaluate regional issues and trends

516 All-Hands Meeting
February 11-12, 2009

Meeting Objectives

- Review status of ongoing activities
- Evaluate regional issues and trends
- Identify near-term actions and priorities

516 All-Hands Meeting
February 11-12, 2009

Meeting Objectives

- Review status of ongoing activities
- Evaluate regional issues and trends
- Identify near-term actions and priorities
- Adjust overall direction and focus of the 516 program

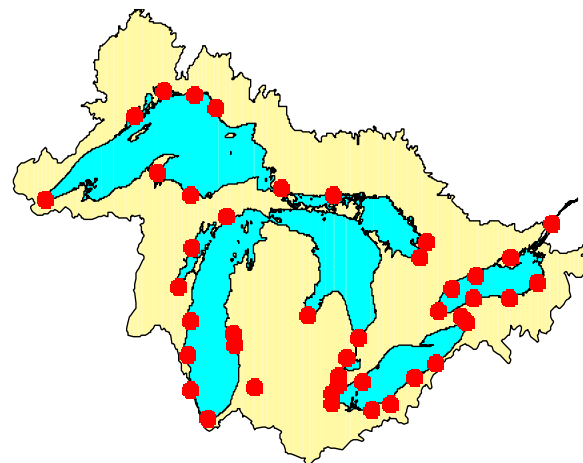
516 All-Hands Meeting
February 11-12, 2009

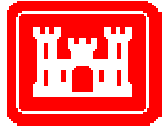


**US Army Corps
of Engineers®**

Great Lakes Tributary Model Authority

- Section 516(e) of the Water Resources Development Act of 1996 directs the Corps to develop sediment transport models for all major Great Lakes tributaries contributing sediment to Federal navigation projects or Areas of Concern.





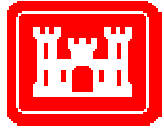
**US Army Corps
of Engineers®**

Great Lakes Tributary Model

Purposes

- Provide tools to assist state and local agencies with planning and implementation of measures for soil conservation and nonpoint source pollution prevention
- Reduce the amount of dredging and related costs
- Support delisting of Areas of Concern





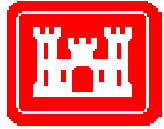
**US Army Corps
of Engineers®**

Great Lakes Tributary Model

Approach

- Tributary models
 - Individual models for tributaries and sub-tributaries
 - Tailored to specific issues or scenarios (agricultural or forestry BMPs, urbanization, bank erosion, etc)
 - Developed in partnership with states, local governments, SWDs and NGOs



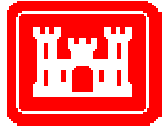


**US Army Corps
of Engineers®**

Great Lakes Tributary Model

Approach

- Web-based tools
 - More general tools that can be used for any watershed or sub-watershed in the Great Lakes basin
 - Useful for screening erosion potential and evaluating certain BMPs
 - Broad applicability for land-use planning



**US Army Corps
of Engineers®**

Great Lakes Tributary Model

Outreach

- Training on tributary models
- Webcasts
- Regional workshops
- Special studies and reports
- Partnerships
- Website
- Media and GLIN

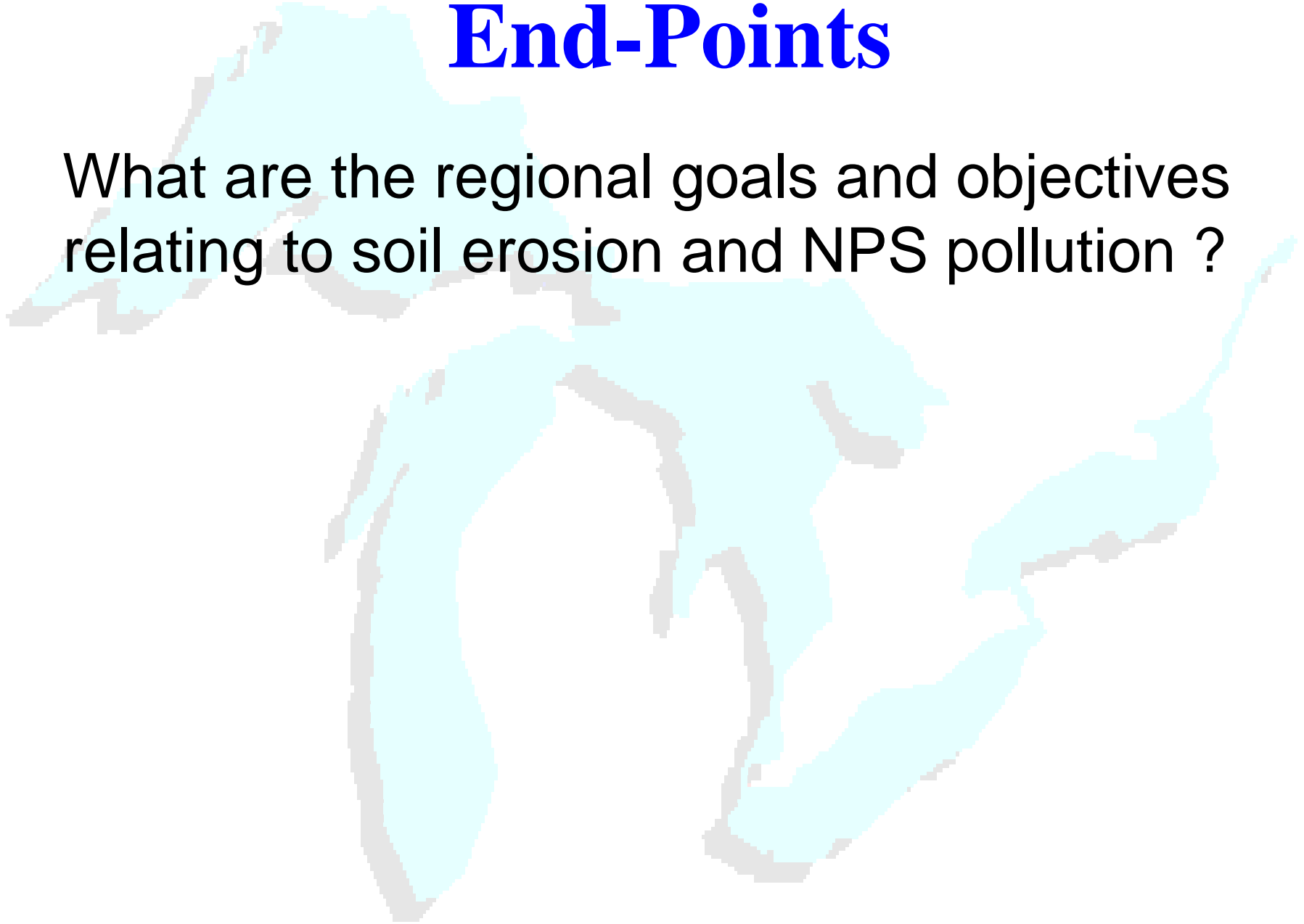
www.glc.org/tributary/

An aerial photograph of a rugged, mountainous landscape. The terrain is characterized by steep, rocky slopes and a prominent river valley. A large, dark reservoir or lake is visible in the lower right portion of the image. The overall scene is high-contrast, with deep shadows and bright highlights on the rocky surfaces.

Regional Issues, Trends and Opportunities

End-Points

What are the regional goals and objectives relating to soil erosion and NPS pollution ?



End-Points

What are the regional goals and objectives relating to soil erosion and NPS pollution ?

- less dredging in Federal channels
- delisting Areas of Concern

End-Points

What are the regional goals and objectives relating to soil erosion and NPS pollution ?

- less dredging in Federal channels
- delisting Areas of Concern
- nonpoint goals of GLRC



2010 Nonpoint Milestones

- Restore and protect 550K acres of wetlands
- Create 335K new acres of buffer strips
- 2M new acres of cropland under residue mgmt
- Certified CNMPs for all acreage in livestock production in P-impaired watersheds
- Plans for improving flow regimes in watersheds with altered hydrology

Issues, Trends & Opportunities



What are the near-field factors that are limiting execution of soil conservation and NPS goals

- physical
- economic
- socio-political

Issues, Trends & Opportunities



- Farming practices
- Urban development
- Forestry practices
- Soil conservation programs
- NPS programs
- State and local capacity